

# 3

easy steps...

**1** Install the DriverLINX® Software.

**2** Insert the Card and configure DriverLINX®.

**3** Start the Test Panel.

...and your Keithley PC card will be working for you.

**Customer Service: 1-888-KEITHLEY**

**Free Downloads:** [www.keithley.com/daqsoftware](http://www.keithley.com/daqsoftware)

Current Virtual Instruments (VIs) for LabVIEW.

ExceLINX - Acquires data directly into an Excel spreadsheet; requires no programming.

VisualSCOPE - Digital storage oscilloscope interface for Windows; requires no programming.

**Register On-line:** [www.keithley.com/register](http://www.keithley.com/register)

**Browse Application Notes and White Papers:** [www.keithley.com/daqnotes](http://www.keithley.com/daqnotes)

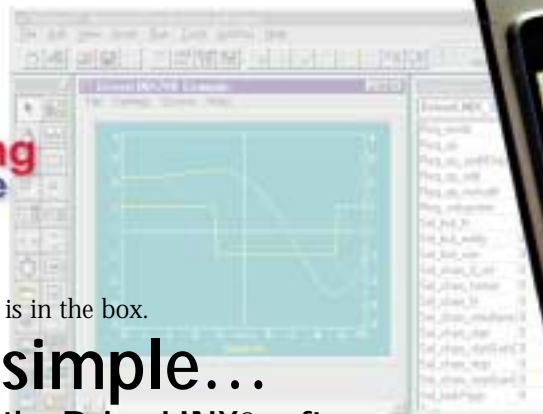
**Frequently Asked Questions:** [www.keithley.com/daqfaq](http://www.keithley.com/daqfaq)

**KEITHLEY**

A Greater Measure of Confidence

**KEITHLEY**

**up & running software**



Everything you need is in the box.

**Keep it simple...**

Load the DriverLINX® software  
*before* you install your new PC card.

# 1 Install the DriverLINX® Software.

## Place the DriverLINX CD into Your Computer's Drive

Setup will start automatically.  
The DriverLINX Browser Introduction screen appears,  
followed by the DriverLINX CD  
Navigator screen.

## Read the On-screen Help Files

1. Select **Read Me First**.
2. Select **Exit**.

## Install the Drivers

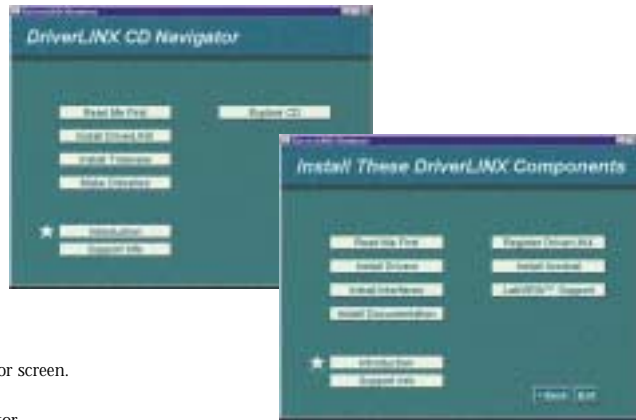
1. Select **Install DriverLINX**.
2. Select **Install Drivers**.
3. Follow the on-screen instructions.

## Install the API Interfaces

1. Select **Install Interfaces**.
2. Follow the on-screen instructions.

## Exit the Installation

1. Select **Exit** to return to the Navigator screen.
2. Select **Exit** to exit the installation.
3. Select **Done** to exit the CD Navigator.
4. From the "System Settings Changed" dialog box, select **Yes**.
5. Your system will reboot.



# 2 Insert the Card and configure DriverLINX®.

1. The Configuration Wizard will start after boot-up is complete and you log in.
2. Select **Continue**.
3. Follow the on-screen instructions.
4. You will be prompted to insert your card.
5. Follow the on-screen instructions after your card is detected to configure the driver.
6. When installation is complete, follow the on-screen instructions to exit the configuration panel and the Wizard.

**CAUTION:** Your PC card is sensitive to static discharge. Take care to prevent static discharge before and while handling your PC card.

# 3 Start the Test Panel.

1. Click the Windows **Start** tab.
2. Locate the **Programs**→**DriverLINX**→**Test Panels** submenu.
3. Select the appropriate test panel for your card:

If your card is ...	Select ...
Digital I/O	AIO Panel
Analog I/O or Analog/Digital I/O	AIO Panel
Counter/Timer	CTM Panel

4. The starting screen for the selected test panel should appear. If the test panel does not start, refer to the troubleshooting section of the Keithley User's Manual.
5. Close the test panel.



**Congratulations! Your DriverLINX software and card are properly installed and working together!**

**KEITHLEY**

Keithley Instruments, Inc. 28775 Aurora Road Cleveland, OH 44139 440-248-0400 Fax: 440-248-6168 <http://www.keithley.com>

PA-729 Rev. A/6-00